

BSE – do we still need to care ?

Dr. med. vet. Stefanie Czub,
Canadian & OIE Reference Laboratory for BSE, NCAD-CFIA
Lethbridge Laboratory



It is over ?

18 new BSE cases worldwide in 2012
(37,280 new cases in 1997 in UK only)

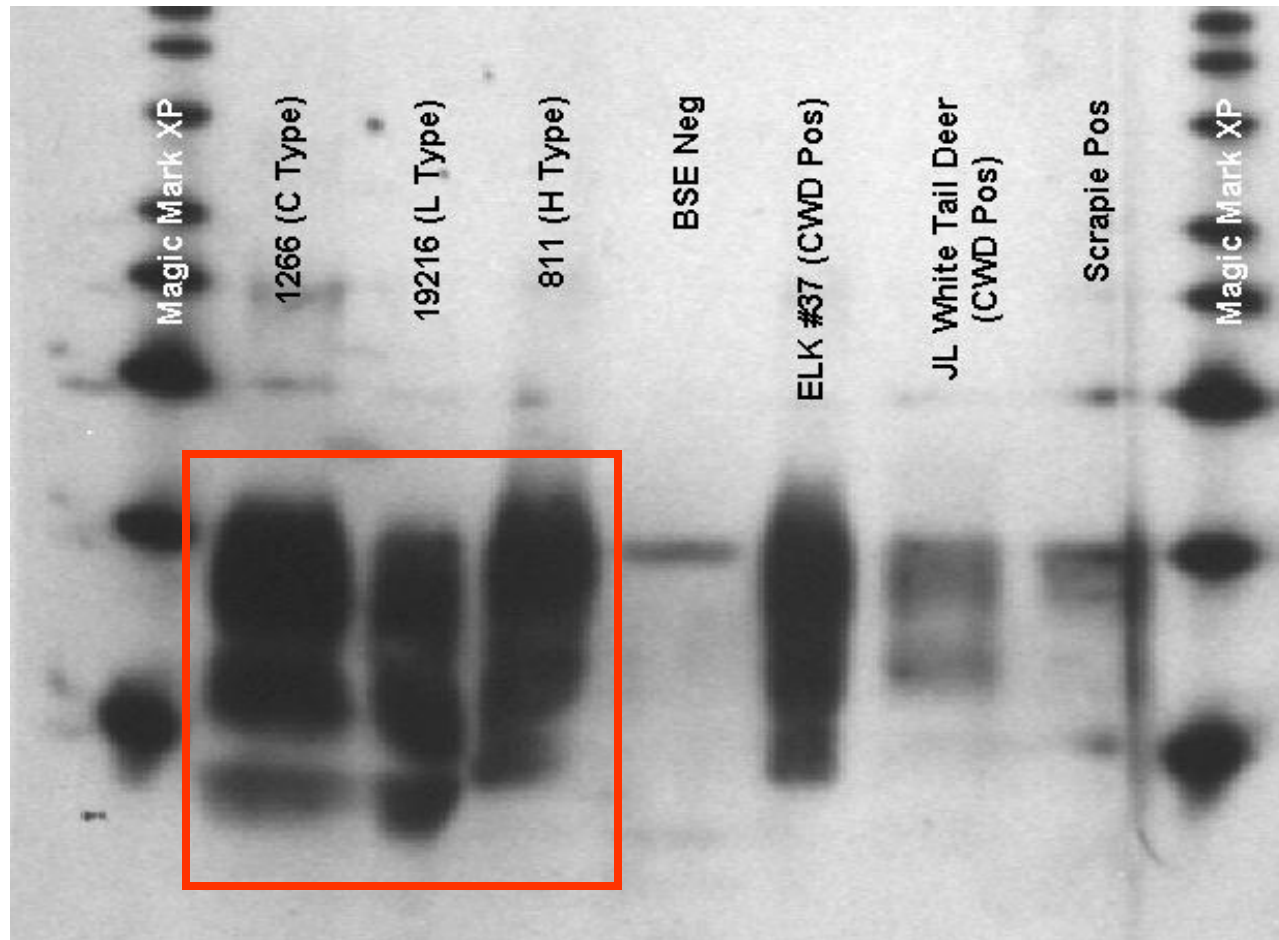
No new BSE case in Canada in 2012 (case
19 confirmed in 2011)

2 new vCJD cases in 2012 (224 cases
worldwide in 1996-2011)

But



Atypical test behaviour



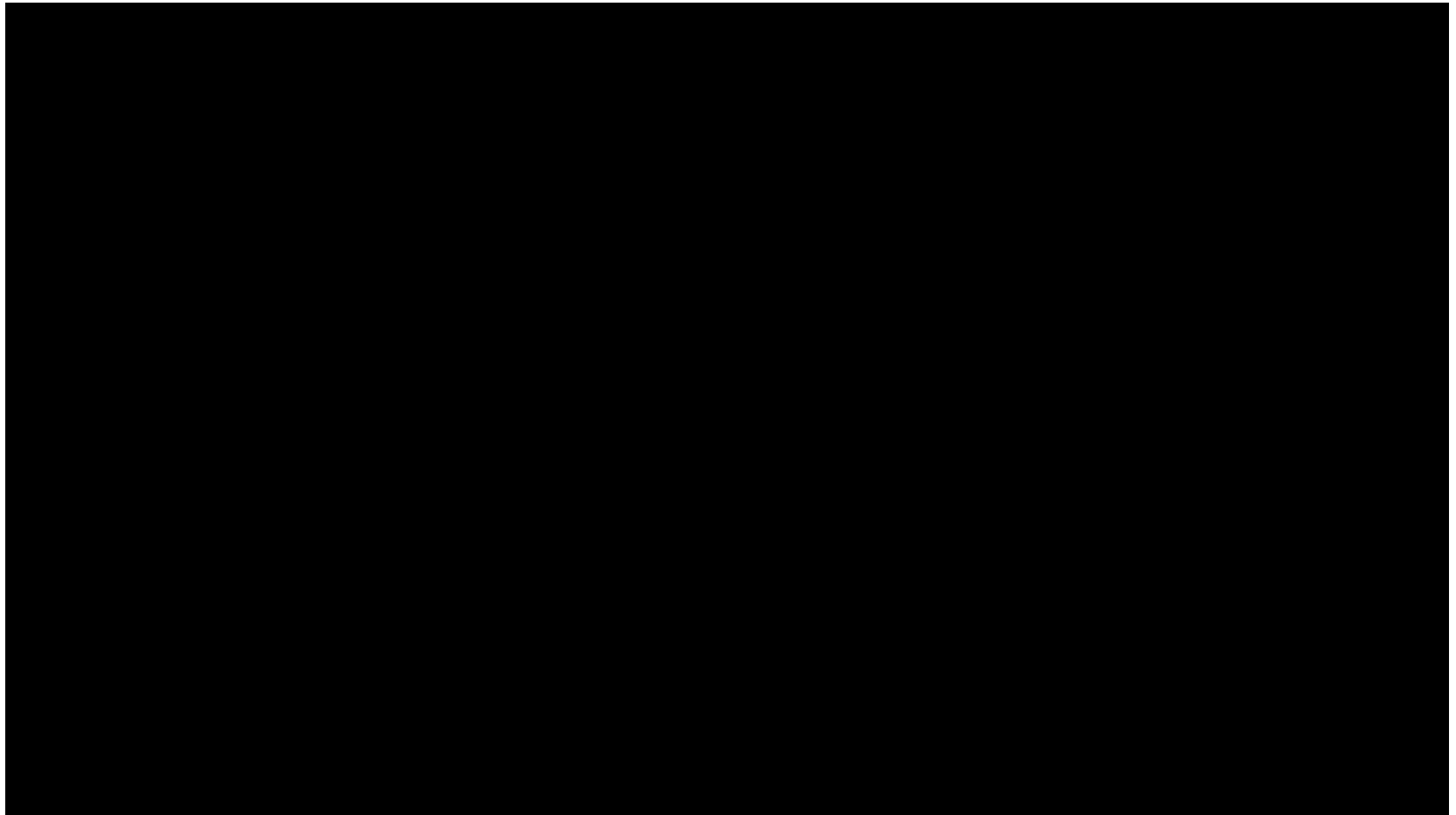
Countries with Atypical BSE:

Country	L-type	H-type	Other	Total
Austria	2	0		2
Canada	1	1		2
Denmark	1	0		1
France	13	14		27
Germany	1	1		2
Ireland	0	1		1
Italy	4	0		4
Japan	2	0		2
Netherlands	2	1		3
Poland	8	2		10
Sweden	0	1		1
Switzerland	0	1	2	3
United Kingdom	3	3		3
United States	1	2		3
Total	38	27	2	67

Research Questions:

1. Atypical BSE transmissible to cattle ?
2. Incubation time of atypical BSE ?
3. Clinical presentation of atypical BSE ?
4. Range of tissues affected in atypical BSE ?

Video



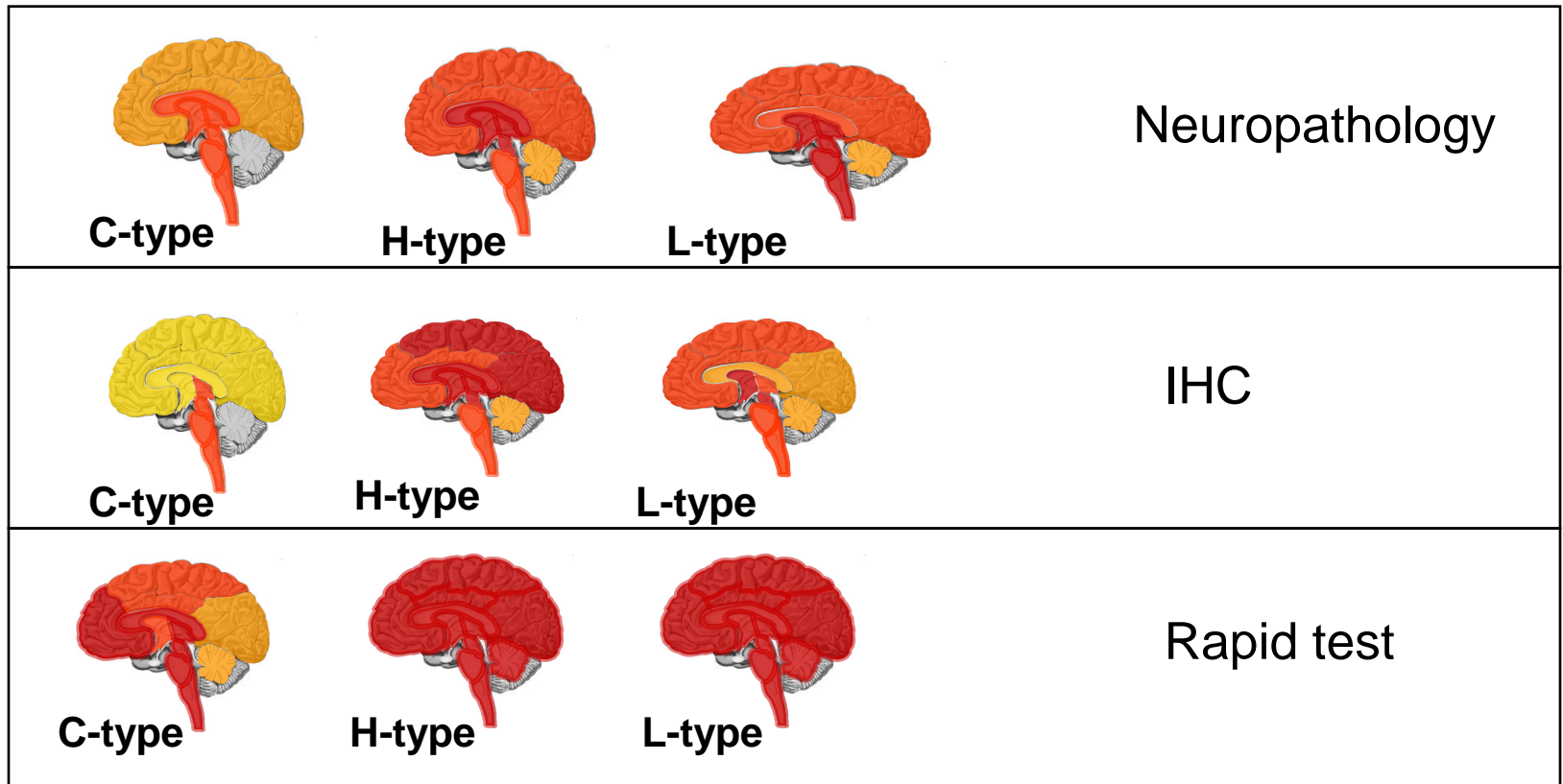
Atypical BSE experiment:

	C-Type BSE	H-Type BSE	L-Type BSE
Incubation period (months)	16-18	11	11-12
Disease Progression	slow, intermittent	slow, continuous	slow, continuous
Disease Duration	2-3 months	5-6 months	5-6 months
Main Symptom	Stiff/Lame	Somnolent	Anxious



Results: Test Signal distribution

(strong - weak)



- Atypical BSE transmits easily & rapidly into cattle
- Atypical BSE transmits easily & rapidly into non-human primates

- Test signals in periphery ?
- SRM in “naturally” occurring atypical BSE ?
- Atypical BSE possible by feeding ?

- Precautionary Approach Applies !!

Thank you:

- T. Ambagala, R. Clark, K. Colwell, S. Czub, S. Dudas, Y. Fang, R. Flitton, C. Graham, J. Gray, T. Pickles, R. Quaghebeur, C. Santiago-Matteo, C. Neher, M. Snodgrass, J. Yang



Alberta
Innovates
Bio
Solutions

ALMA
Alberta Livestock
and Meat Agency Ltd.

